

MetroMap 3D OVERVIEW

Provide context to your projects, help
develop and visualise scenarios in 3D



MetroMap 3D

MetroMap 3D data provides access to high resolution 3D city mesh models that provide context to your projects, help develop and visualise scenarios as well as offer a comprehensive 3D base dataset for change monitoring.

MetroMap 3D models are accessible as complete city models or as custom 3D data for specific areas of interest via our Store.

3D City Models

Explore our range of fully-textured 3D mesh models of major Australian cities. Purchase full city areas off-the-shelf & receive data in your preferred 3D format.

3D Custom Data Store

Select an area of interest via the MetroMap Store and pay for just that area and the 3D data format that you need. Receive a link to download your data.

MetroMap 3D physical data can be provided in a range of formats suitable for use in 3D GIS and web applications. Note that some of these formats are available only on request and additional charges may apply.

Major 3D formats

FBX, OBJ, Cesium 3D Tiles, ESRI i3s, Bentley 3SM/3MX, Skyline TerraExplorer 3DML

Other GIS outputs

LAS 3D Point Clouds, DSM, True Ortho



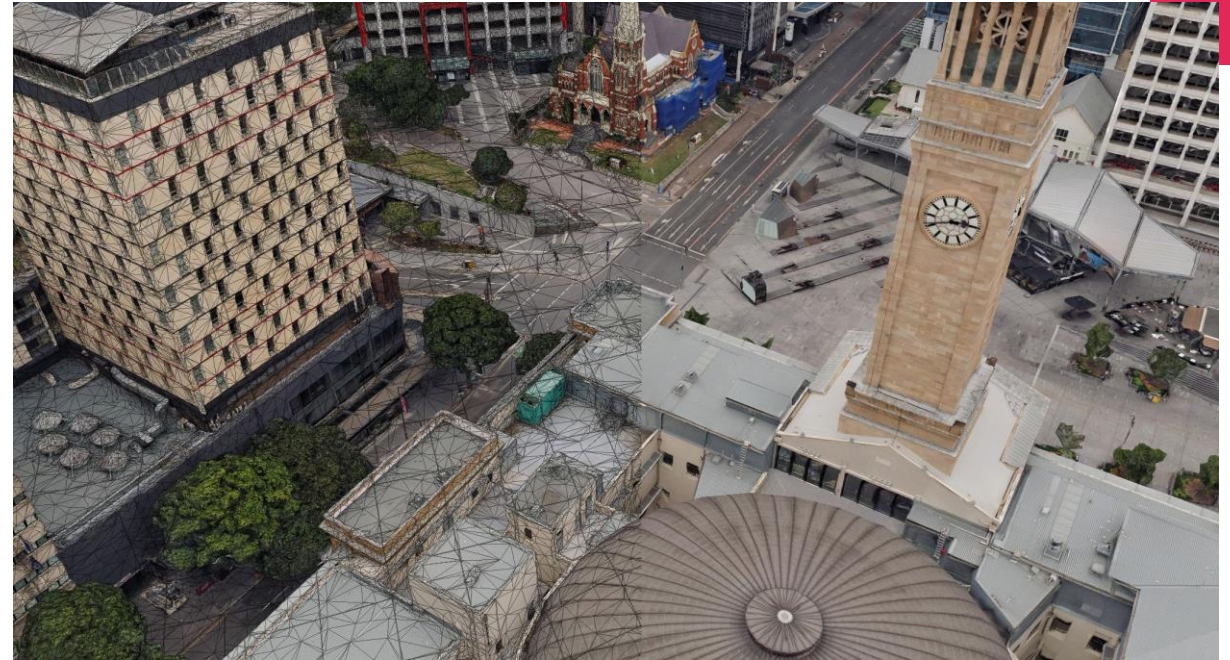
MetroMap 3D Off-the-shelf Models

If you're an extensive user of 3D data and looking for a complete city model, our off-the-shelf models offer you the greatest value.

These textured mesh models can be purchased off-the-shelf as a physical copy, in your desired format. Additional outputs such as LAS 3D Point Clouds, DSM, and True Ortho are also available on request, at an additional cost.

Off-the-shelf 3D models are available in standard (6 - 7.5 cm) as well as higher resolution (2 cm) for select cities. Our library of data is constantly updated, and our most recent off-the-shelf 3D city models can be viewed [here](#).

Looking for an older historical model?
[Contact](#) us and we can assist you with one of our older 3D mesh models.



MetroMap 3D Custom Data Store

If you're not sure that you would require a full city model, but instead prefer to purchase only a select area of interest, the MetroMap Store gives you the flexibility to do just that.

Through the store you can view online the 3D model prior to purchase and with a few clicks select, pay and download your dataset. It's as easy as that !

If you can't find the 3D model for a specific area that you're looking for [contact](#) our team, and we'll do our best to assist you.

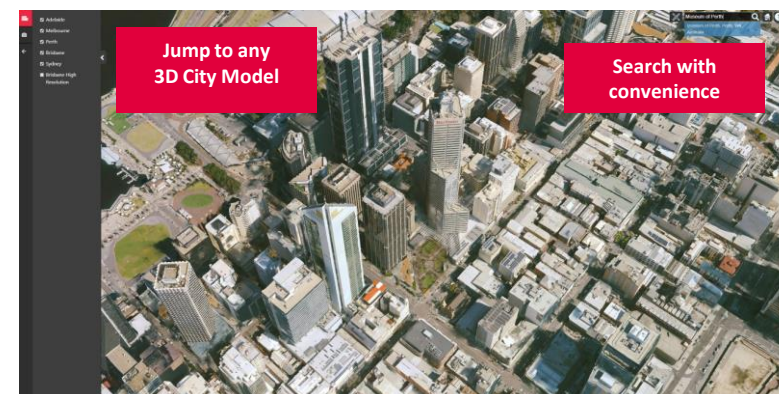
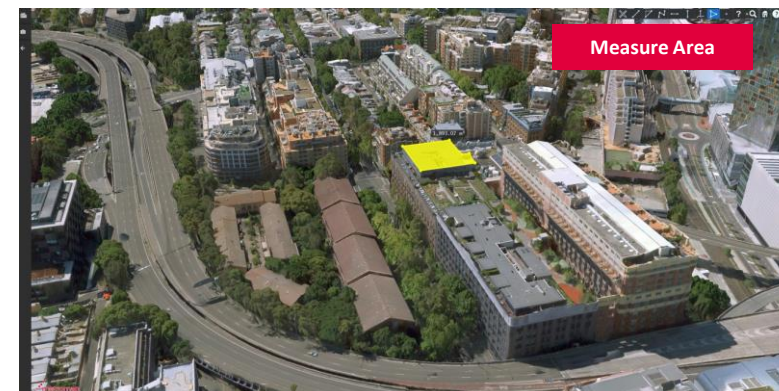


MetroMap 3DView Web Interface

The MetroMap 3DView interface allows you to view MetroMap 3D data in a web browser from any computer / tablet / mobile and offers a continuously growing range of measurement & analysis tools.

MetroMap 3DView allows you to accurately calculate distances and areas within the 3-dimensional space with information such as height, location coordinates and slope information of points on the ground as well as structures.

Interested in MetroMap 3DView?
Speak to our team today.



Request a 3D Sample Dataset and Trial MetroMap 3D Today

www.MetroMap.com.au/trial

